



## 10. Aircraft Hangar

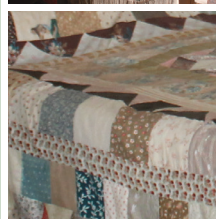
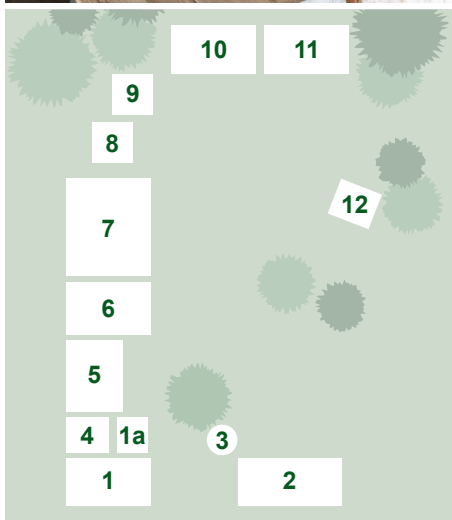
This Tiger Moth aircraft was the first aeroplane used for spreading superphosphate in Australia, undertaken by East-West Airlines at AS Nivison's Mirani property in February 1950. Prior to that it was used in 1947 to spread 600 acres of linseed at Walcha. The aircraft was built in Sydney in 1940 for the RAAF and was used by the RAAF for pilot training at Narromine, Narrandera, Bundaberg and Lowood between 1940 and 1943. Then used at the Air Gunner School at West Sale, Victoria. It was sold by the Federal Government at the end of the Second World War to Edward Macarthur-Onslow who used it at his Flying and Gliding School at Camden. At one stage it was fitted with a spray tank and boom and used to spray tobacco crops at Dalby, Queensland. It was donated to the Society in 1965 by Mr Tom Watson, managing director of Aerial Agriculture Pty Ltd. The hangar was erected by the Rotary Club of Walcha.

## 11. Machinery Shed

This shed was also erected by the Rotary Club of Walcha and houses various items of farming machinery, including a Sunshine Harvester, large thresher, cart and wagon.

## 12. Selector's Hut

Huts such as shown below were of robust construction to permit ready towing from one selection to another. This building came from the local grazing property Tiara.



## Walcha Pioneer Cottage and Museum Complex

111n Derby Street Walcha NSW 2354

### Opening Hours

Saturday and Sunday ..... 10.00am – 4.00pm

Christmas Day and Good Friday ..... Closed

Entry at other times by request

### For more information please contact

Truda Newman ..... 0400 567 918

Jane Morrison ..... 02 6778 0502 / 0409 897 348

Bob Walsh ..... 02 6777 2318

Kerry Dickson ..... 0488 779 133

enquiries@wdhs.com.au

or the Visitor Information Centre ..... 02 6774 2460

This brochure has been  
printed with the assistance of  
Museums & Galleries NSW

43 – 51 Cowper Wharf Road  
Woolloomooloo NSW

**Museums  
& Galleries  
NSW**



111n Derby Street Walcha – Opposite the Showground

www.walchadhs.com.au





## 1. Pioneer Cottage

Built on this site in 1862 by Walcha's first policeman Constable James Buckland. The area at that time was 2 ½ acres, which included the adjacent land facing North Street. The cottage and land was purchased by the Society in 1962. When first built the cottage had a detached kitchen (1a on plan of the museum complex). Early on this kitchen was divided into two rooms, one of which was the servant's room. The old kitchen now houses domestic and agricultural tools from the colonial days. The main bedroom contains a four-poster bed, cedar wash stand with jug and wash basin, chamber pots, cedar table, and bed warming irons. The ceiling was lined with calico to keep out dust and insects. Items of cedar furniture are on display in the dining room and parlour. The present kitchen had a fuel stove when the building was purchased by the Society in 1962. This has since been removed and the fireplace set up with cast iron fountain, kettles and other items typical of the earlier days. The bathroom contains a hip bath, foot bath, wash stand and some laundry items – wash boards and wash tub. Newspaper was often plastered over the inside of vertical slab walls to exclude draughts.

## 2. Museum Building

This building also dates from 1862. It was built by James Thomas Smith at 117e Fitzroy Street. The Cross family donated it to the Society in 1969. It was moved to the present site and opened on 2nd May 1970. The large cedar counter in the main room came from Erratt's store which for many years was Walcha's premier store. Another room contains memorabilia from the World Wars and a display of surveyors' implements that belonged to JF Campbell (1852 – 1938), a surveyor and historian who worked in Walcha from 1888 until the early 1900's. The next room contains

a display of early medical equipment and a photo of Dr William Vint Aspinall who had a practice in Walcha from the late 1850's until his untimely death at 34 years of age in 1863. He drowned while swimming in the Apsley River. Look in the photo room for a group of sketches of some business houses and dwellings in Walcha in 1900. The adjacent room contains a selection of Aboriginal artefacts and a set of convict leg irons and handcuffs.

## 3. Aboriginal Carved Tree (Dendroglyph)

Given to the Society by Mr. Alan Cross in 1965. It was one of a group of similarly carved trees on Silvermount at Brackendale. Consultations between the Society and the local Aboriginal community did not reveal any exact details of the use or importance of the tree but there was mutual interest in its preservation. Stories handed down in the Cross family describe the carved trees as memorials to Aborigines killed there many years ago in a battle between a local tribe and a coastal tribe.

## 4. Amenities Block

The amenities block was built with the assistance of the New South Wales Government.

## 5. Caretaker's Cottage

This is not available for inspection. The building materials came from the old Round Swamp homestead built in the 1800's to the southeast of Walcha. Mr & Mrs Jim Hoy gave the building to the Society, which was then demolished and transported to Walcha. The Lions Club of Walcha erected it on this site in May 1965.

## 6. Wool Industry Hall

The Wool Industry Hall was once the School of Arts hall at Glen Morrison, a gold mining settlement about 25km to the south of Walcha. One of several buildings that became disused after mining ceased. In 1973 the Walcha Council accepted the Society's tender of \$1 for the purchase of the building. It was transported to its present site in two sections. It now houses several early wool presses, including Koerstz & Ferrier presses, shearing machinery, wool bins, fleeces, processed wool and a large photographic display of wool and shearing activities.

## 7. Machinery Barn

This building houses a collection of horse drawn vehicles, tractors and a variety of old agricultural implements including a skin press.

## 8. Automatic Telephone Exchange

This was the first of several automatic telephone exchanges installed in the rural districts and around Walcha. It serviced subscribers at Ingleba.

## 9. Blacksmith's Shop

Set up as a blacksmith's workshop this houses a variety of tools and equipment including a tool for the repair and welding of white hot steel rims from the wheels of horse drawn vehicles